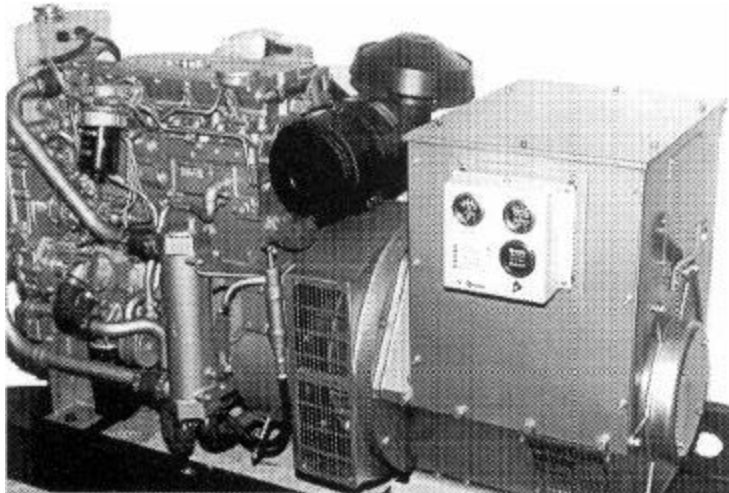




MARINE
DIESEL
GENERATORS **1000 Series**
 30 - 100 KW



SPECIFICATIONS

In-Line 4 & 6 Cylinder	4-Stroke-Cycle-Engine
Bore - in. (mm)	3.937 (100)
Stroke - in. (mm)	5.00 (127)
Displacement - cu in (liter)	243 (4) 365 (6)
Combustion System	Direct Injection
Rotation (from flywheel end)	CCW
Rated Engine Speed	
60 Hertz	1800 rpm
50 Hertz	1500 rpm
Compression Ratio	16.0:1

- **ECONOMICAL**
 Low initial cost with excellent fuel economy
 Quadrum Combustion
- **DEPENDABLE**
 Proven Perkins Power
- **HIGH QUALITY COMPONENTS**
 Class H insulation for marine environment
- **MAINTENANCE**
 Ease of access
 One side servicing

STANDARD EQUIPMENT:

- Breather
- Engine lifting eyes
- Gear driven lube oil pump
- Gear driven water pump
- Gear driven fuel injection pump
- Fuel transfer pump
- Primary Filter
- Fuel and oil filters
- Generator set governor
- Water cooled Exhaust Manifold
- Air cleaner

STANDARD EQUIPMENT (CONT'D)

- 12 volt starting and charging system
- Local/remote start switch
- Instrument panel
- Hour meter
- Emergency shutoffs op, wt
- Structural steel base
- Newage generator

ALSO AVAILABLE WITH:

- Heat exchanger cooling
 (CuNi removable bundle)
- Optional Marathon generator as requested
- Electronic Governor
- Belt Guard
- Vibration Isolators
- Overspeed protection



Tacoma Diesel and Equipment, Inc.

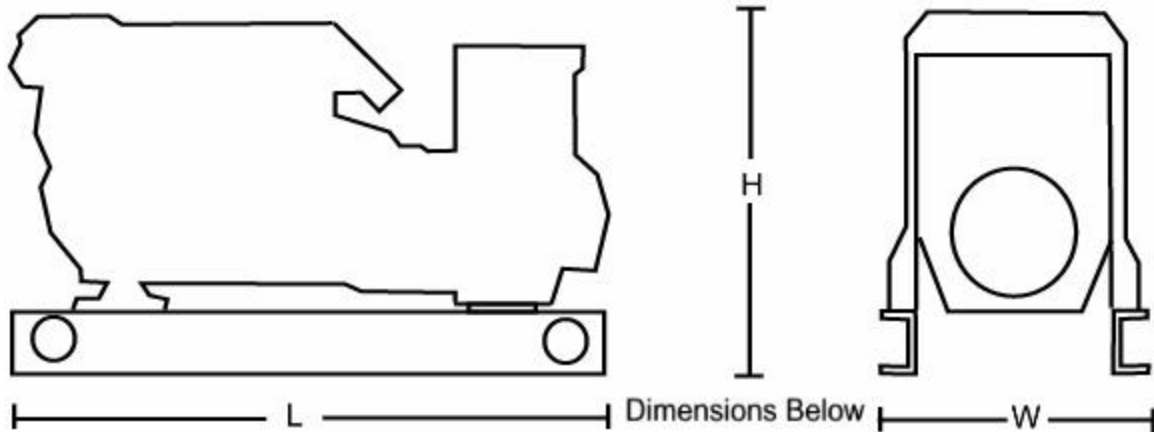
444 - 54th Ave. East

Tacoma, WA 98424

Tacoma (253) 922-8171 • Toll Free 1-888-922-8171

<http://www.tacomadiesel.com>

1000 SERIES MARINE



TECHNICAL DATA

1000 SERIES MARINE GENERATOR SETS		1004		1004T		1006	
Rating Information	Typical Prime KW	50Hz	60Hz	50Hz	60Hz	50Hz	60Hz
		Typical Standby KW	36	42	61	72	83
Physical Factors	Length	58 in.		67 in.		73 in.	
	Width	28 in.		28 in.		29 in.	
	Height	36 in.		36 in.		36 in.	
	H.E. Loaded Weight	1687lb.		2161 lb.		2587 lb.	
Capacities	Oil Capacity	2.22 gallons		2.22 gallons		4.42 gallons	
	Coolant Capacity	4.95 gallons		4.95 gallons		6.83 gallons	
Performance Data	Fuel Consumption (100% Load)	2.628 qal	3.75 qal	4.75 qal	5.5 qal	4.05 qal	4.79 qal
	Fuel Consumption (50% Load)	1.5 gal	2.5 gal	2.62 gal	3.0 gal	2.03 gal	2.64 gal
	Coolant Flow G.P.H.	21.87	26.62	21.87	26.62	45.5	55.5
	Combustion Airflow ft3/min	92	111	100	130	200	257
	Coolant Heat Rejection BTU/min	2388	2559	2672	2957	3537	4128
	Exhaust Gas Flow ft3/min	283	343	494	600	599	743

RATING CONDITIONS

RATINGS

Ratings are based on SAE J1349 standard conditions of 100 kPa (29.61 in Hg) and 25°C (77°F). These ratings also apply at ISO 3046/1, DIN 6271 and BS 5514 standard conditions of 100 kPa (29.61 in Hg), 27°C (91 °F) and 30% relative humidity.

FUEL

Fuel consumption is based on fuel oil having an LHV of 42,780 kJ/kg (18,390 Btu/lb) and weighing 838.9 g/liter (7.001 lbs/U.S. gal). Power ratings are based on engine equipped with fuel, lube oil, and jacket water pumps but without fan.